

Rotokauri School Newsletter



Issue No: 10

4 July 2013

LAST CHANCE

Monsters University in 3D
Pre Release this SUNDAY

Hey MUM and DAD

Can't make the movie but don't want the kids to miss out, call
Marie Carlson on 0274303844.
I can organise to supervise your children during the movie as there are heaps of Rotokauri
Mums and Dads that will be there.

When: Sunday 07th July

Where: Hoyts Te Awa

Time: 4pm

Tickets Only:

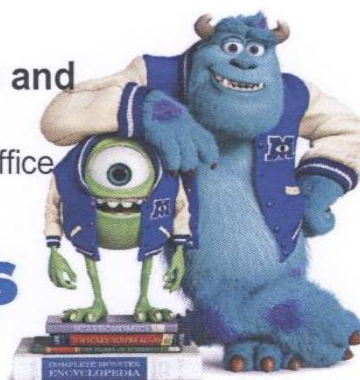
\$20.00 Adults

\$15.00 Children (School age)

**Tickets include snack pack, drink, ice cream and
3D glasses**

Grab your tickets today from the Rotokauri School Office

Disney · PIXAR
**MONSTERS
UNIVERSITY**



ROKOKAURI SCHOOL
462 Rotokauri Road
R D 9
HAMILTON 3289

Telephone (07) 849 5068
Fax (07) 849 4371

Email: office@rotokauri.schoolzone.net.nz

Dear Parents

Nga mihi o te wa kia koe me to whanau.

ROKOKAURI SCHOOL MISSION STATEMENT

Our positive environment will actively engage our students in learning.

ROKOKAURI SCHOOL VISION

We are responsible, confident learners and communicators.

ROKOKAURI SCHOOL VALUES

Respect, Responsibility, Honesty, Persistence and Excellence.

OPEN INVITATION TO ALL OUR PARENTS

No doubt you have had feedback from your children regarding an online learning platform called Mathletics. Graham Flanagan, a representative from Mathletics, will be at our school to show all our parents the programme on Wednesday, 10th July at 7.30pm in the Multipurpose Room. Please send the return slip below to the office by Tuesday, 9th July if you are going to attend this evening.

The benefits of this programme are many:

- The format makes practising Maths skills fun and helps students to think of problem solving strategies.
- The content is based on The New Zealand Curriculum and covers all of the strands from Year 1 to Year 13.
- Students receive instant feedback on answers, including explanations about what they should have done.
- Teachers can set regular course work and allow students to compete on Live Mathletics.
- Teachers can set up individualised learning programmes as part of the daily maths coursework.

There are many other positives which I'm sure Graham will enlighten you on, for those that attend. The staff are currently considering this programme for all of our children in 2014. So confident are we that this will make a difference that we are willing to fund \$10 per child. We see this as a strong educational investment in supporting our children's learning.

If you as a family were to buy this programme it would cost you \$99. If we combine school and home we could bring the cost down to \$30 per pupil (with the school paying \$10 of that). If we manage to get over 80% of our students involved then the cost could be further reduced to parents. We would value your thoughts and feedback about this

programme being introduced across the school in 2014. Please email your thoughts / ideas to mark@rotokauri.schoolzone.net.nz

RETURN SLIP

Yes, I / we will be attending the Mathletics information evening on Wednesday, 10th July at 7.30 p.m. in the Rotokauri School Multipurpose Room.

Name/s: _____ No Attending: _____

NATIONAL STANDARDS DATA

This year we have released to our community our National Standards data. We have also sent our National Data to the Ministry of Education as required. I believe that over the coming months National Standards data will make its way into the media in one format or another. My professional judgement is that I would be very careful not to read anything into those statistics. The reason for this is that the various schools are using different sources to assess their students and therefore it is **not** a National Standard. Last year the Prime Minister acknowledged that the data was quote 'ropey'. The research of Professor Martin Thrupp of Waikato University into National Standards confirms that the data is not national and it is not standard. He also warns that the standards are having an impact on the delivery of a broad based curriculum.

COMMUNITY ENGAGEMENT

We are lucky that as a school we have a lot of contact with our parents. We would like to enhance this contact in a way that will improve the social and educational outcomes of our students. Therefore, we would like the contact email address for every family at our school by the 12th July. We can then put the email addresses into classroom groups and teachers will be able to communicate with you in a different format which could possibly be more effective.

Please make sure that your family name accompanies the email address that you send to the office. office@rotokauri.schoolzone.net.nz

AN EVER INCREASING PROBLEM

At Rotokauri School we aim to give children as many educational opportunities as possible. Staff put a lot of time and effort into organising trips, visiting artists or extra activities. It is becoming more difficult due to the number of families that are not returning permission slips or money by the due date. In some instances recently, parents received up to 4 reminder notices regarding trips. This delay in receiving money and permission slips in advance, impacts on the staff being able to finalise numbers attending, payments and transport. It is not appropriate to leave these things to the last minute. In the future, if payment and / or permission slips have not been received by the due date (in advance of the event / activity), children will not be able to attend and alternative arrangements will be organised at school.

A special thank you to all those parents that do pay on time or send slips back by the appropriate date. We appreciate your efforts!

PARKING

When we have rainy days parking at our school will always be difficult. I have counted up to 91 vehicles coming through our gates on some occasions. There are ways of alleviating the carpark congestion. One solution would be to change the time you come to pick up your child / children from school. Rather than collecting your child exactly at 3.00 pm try 3.10 pm or 3.20 pm. Another solution to the problem is to park your cars down Bunyard Road and then make the short walk up the hill to collect your children.

ELECTRICAL TESTING

Electrical items in schools need to be tested, tagged and put onto a register. We are looking for someone who is willing to take this job on for the school. You do not need to be a qualified electrician and we do have the electrical testing equipment on site and will offer training. The job only takes a few hours a year and is not a major time commitment. Please contact me if you would be interested in assisting the school with this.

ROKOKAURI CAR SHOW

This year we will be holding another car show, on Sunday, 10th November. All profits will go to the refurbishment of the library. As part of the Enterprise programme students will be involved in setting up classroom stalls. The 8 classrooms have indicated that they will be setting up stalls with food and entertainment for the paying public.

In the past the car show has been successful because we have managed to get an amazing array of cars to the event. We would love for you to spread the word and invite all of your family and friends to come along. If you know of someone who has an interesting car tell them to contact me on mark@rotokauri.school.net.nz

If you would like to be a part of the organising committee please join us for our first meeting tonight at 7.30 pm in the staffroom (Thursday, 4th July).

BOT REPORT TO THE SCHOOL COMMUNITY

The Board of Trustees for Rotokauri School met on the 19th June and discussed a number of agenda items. One of which was deciding to lease (rather than buy outright) a new computer server for the school, which will be replaced with a new one every 3 years. The benefits include having a server and associated equipment that will provide us with the latest technology at a cost-effective price. Outdated computer equipment will be brought up to speed or replaced, and new equipment can be purchased to enhance the learning opportunities for our students.

In the Principals report, special mention was made of Rotokauri School students' excellent behaviour on class trips, which was great to see. Mark also gave feedback from the parent surveys, and from this, we discussed how the school has tested for 'gifted and talented' students and how there will be some retesting to detect children who may have slipped through the system. All the recently advertised ballot positions for students have been filled, and overall attendance rates are great. In general, our school culture is valued and appreciated. Next learning steps for students will be communicated to parents early next term, within the first 3 weeks of returning to school, so keep an eye out for these. Lois Amery and Casey Donoghue will continue working at Rotokauri School for Terms 3 and 4. Room 8 will open for New Entrant children with Jacqueline Hill as their teacher.

Report compiled by Rosemary Pritchard, Personnel Officer on the BOT

STUDENT CONSULTATION REVIEW 2013

The following review was completed in May 2013. Every student in the school was given the opportunity to write their views down in relation to the following 15 questions. It was carefully explained to all the students that there was no right and wrong answers and they were to respond based on how they felt. Students were not only encouraged to circle the answer that best represented their views but also to make a comment next to their response. Some students had similar responses and therefore this is signified by a number next to the comment.

In all 154 individual response forms were logged. Two of the junior classes responded with their class views on each of the questions.

1. What things do you like about our school?

- Friendly caring students. (39)
- Friendly teachers. (20)
- Large fields and playgrounds. (18)
- Small school - It's not overcrowded. (13)
- No Uniform. (13)
- School Values. (12)
- It's safe. (9)
- Buddy System. (6)
- Art. (6)
- It's fun. (6)
- Canteen. (6)
- Having a pool. (5)
- Information technology equipment (5)
- Maths. (5)
- Writing. (4)
- PE Shed (4)
- No Bullies (4)
- Assemblies. (4)
- Freedom. (3)
- Tennis Courts (3)
- Sandpit. (3)
- Sports activities. (2)
- Native area. (2)
- Leadership opportunities. (2)
- MP Room. (2)
- The views and our environment. (1)

2. Do you feel Rotokauri School provides a positive learning environment for you to learn in?

Yes - 87.5%

No - 0.5%

Unsure - 12%

3. Are you actively engaged in your learning?

Yes - 88%

No - 1.7%

Unsure - 10.3%

4. How do you know if you are learning or achieving at school?

- Feedback from my teacher at school. (22)
- My report tells me. (13)
- Teacher shows us on charts. (7)
- Friends tell me. (6)
- Certificates in class or at assembly. (6)
- My ability to complete work. (5)
- I feel proud. (4)
- I just get better at stuff. (3)
- I go home and tell my parents. (3)
- I learn things that I didn't know before. (2)
- The work becomes easier. (2)
- You finish things quicker. (2)
- It's easy to remember things. (2)
- National Standards. (1)
- Not getting distracted. (1)

5. Do you think the school supports you to be a confident learner?

Yes - 86%

No - 1%

Unsure - 13%

6. Do you think as a school we promote the following values – Responsibility, Excellence, Persistence, Honesty and Respect?

Yes - 82.3%

No - 3.4%

Unsure - 14.3%

7. Do you think the school has high expectations of you to achieve and be the best you can be?

Yes - 86.1%

No - 2.8%

Unsure - 11.1%

8. Do you feel Rotokauri School is a safe school to learn in?

Yes - 89.2%

No - 1.5%

Unsure - 9.3%

Comments from students:

- Definitely better than other schools.
- Safe and the students are supportive.
- There are no bullies.
- No one bullies me.
- I feel like I am with my family.

9. Do you feel we cater for all of your learning needs?

Yes - 83.5%

No - 2.6%

Unsure - 13.9%

Comments from students:

- We have learning apps on our iPads.
- No because I don't go to Mrs O'Brien.
- Most of the time.

10. Do you think we give your parents enough information to help you to be engaged in your learning?

Yes - 75.8%

No - 7.1%

Unsure - 17.1%

11. Are we an inclusive school?

Yes - 83.1%

No - 5.3%

Unsure - 11.6%

12. Do you feel students co-operate well with one another in the classroom and on the sports fields?

Yes - 75.3%

No - 7.2%

Unsure - 17.5%

13. Do you feel confident to ask a teacher for help if needed?

Yes - 84%

No - 6.2%

Unsure - 9.8%

14. As a member of Rotokauri School can you rate your happiness in relation to being at the school?

The students were asked to place themselves on a number line continuum
Very unhappy was signified by the numbers 1 and 2.

Happy was signified by the number 5.

Very happy was signified by the number 10.

The results were averaged to get an overall feeling of student happiness at Rotokauri School.

AVERAGE HAPPINESS SCORE 7.4

15. What is the one thing this school could do for you that would make a difference to your learning?

- More out of class stuff. (9)
- More technology. (8)
- More books in the library. (7)
- More Art. (6)
- More cooking. (5)
- More dance. (3)
- Better netball dresses. (3)
- More teachers. (1)
- Team challenges
- Nothing this school is great to learn in.
- More student teachers.
- Make the over achievers join a special classroom.
- More duty teachers.
- Add 15 minutes to the end of the day.
- Learn to climb trees.
- Larger toilets.
- Sell food that matches the weather.
- Take all the technology away and just have books.
- I feel good here.

- More writing recovery.
- Fun things to remember the knowledge.
- Have our own laptops.
- More practical stuff.
- Spend more time on one thing.

FINDINGS

The statistics speak openly for themselves and a lot of positives can be taken out of this for the whole of our community.

WHERE TO NEXT

We need clearer definitions and understanding in relation to some of the terminology used at our school and in education generally. I propose working with staff as part of our Professional Development and a selected group of students with the aim to come up with clarity in relation to words used in this review and therefore diminish the number of students who answered UNSURE.

These are the questions I propose to tackle:

1. What does a positive learning environment look like at Rotokauri School?
2. What does an actively engaged student look like at Rotokauri School? What sort of traits would they exhibit?
3. What sorts of feedback work best for the learner?
4. What are the traits of a confident learner?
5. How do we encourage and value high expectations at this school?
6. What does inclusive mean in this school?

FOLLOW UP FROM THE STUDENT CONSULTING 2013

PRE-AMBLE

From our initial review questions were raised that needed further consultation and investigation with our students. Teachers were given two weeks to work with their students and craft ideas that could be shared.

1. What does a positive learning environment look like at Rotokauri School?

- Students communicating with and helping one another.
- Everybody showing respect to one another.
- Students feeling confident to ask questions.
- Full participation by all students in all areas of the curriculum. Students actively engaged in the learning process.
- Positive language.
- A mixture of independent and collaborative learning styles on display.
- Strong relationships between learners and teachers.
- Respect for the learning environment.
- Laughter – Happiness – Calmness.

2. What does actively engaged look like at Rotokauri School?

- Students are on task and using time wisely. Students completing tasks that they have started.
- Students wanting to do their best. Students who have high expectations of themselves.
- Students asking quality questions.
- Students that have strong organisational skills.

- Students collaborating together.
- Students showing the value of persistence.
- Students willing to take learning risks.
- Students are focused with an aim / goal in mind.

3. What sort of feedback works for the learner at Rotokauri School?

- Students want very specific feedback in relation to what they are doing and what they need to do next (next learning step).
- The feedback needs to make the students reflect on their learning.
- The feedback needs to be timely - as close to the completion of the activity as possible.
- The feedback will be twice as powerful if the parents receive the same information.
- The feedback needs to be in relation to real authentic learning situations.
- The students need to feel as if the feedback will make a difference and doesn't just follow a system of praise for the sake of it.

4. What are the traits of a confident learner at Rotokauri School?

- Willingness to take risks and be persistent.
- Willingness and confidence to feedback new knowledge.
- Able to problem solve independently.
- Students who have high expectations of themselves.
- Able to communicate with a wide variety of audiences.
- Able to listen to others.
- Actively wants to learn new ideas and skills.
- Able to ask for help when required.
- Not afraid to answer a question even if they think it might be wrong.

5. How do we encourage high standards at Rotokauri School?

- We have values that we all believe in.
- We give our students the self-belief that they can succeed.
- We give constant feedback to our students.
- We assess students and make them aware of their progress.
- We goal set with our students.
- We celebrate successes within our classes and school.
- We share our ideas to help others.
- We use students as role models to encourage others to reach their potential.
- We give feedback to parents and community through newsletters.

6. What does Inclusive look like at Rotokauri School?

- Team - together everybody achieves more.
- We appreciate that we are all unique with special talents.
- We respect everyone and do not make judgements based on age, gender, religion, culture, politics or national origin.
- We include everybody in all that we do.
- We all have the right to feel happy and safe within our school.
- We all co-operate in an environment which enhances our ability to learn.
- We feel proud to be a part of Rotokauri School.

FEES OWING

Please remember to pay the following to the school office:

- Religious Instruction fee per year - \$5.00 per child
- Photocopying fee per year - \$4.00 per child
- Room 2 – Newspaper in Education fee - \$3.00
- Year 7 & 8 students only – Technology Fee \$100.00 per student per year.

Thank you to the parents who have paid their fees already. ☺

WEARABLE ARTS MUSEUM TRIPS

A huge thank you to all the parents / caregivers that provided transport for the class visits to the museum last week and on Monday. Taking buses each day would have added a considerable cost to the students.

Also, thank you to the wonderful parent helpers for assisting staff with supervising students within the museum. We hope you enjoyed your time viewing the exhibits as much as the students.

As with all trips out of the school we can be proud of our student's behaviour. Well done to you all.

ONE DAY OLD CHICKS

Please remember that next Thursday, 11th July is the last day for ordering one day old chicks. These are the only chickens that can be entered in our school Agricultural Day. Information about caring for your chicks will come home next week. We are also organising a guest speaker from the Hamilton Bird Society to speak to the children about raising their chicks. This will happen early in Term 3.

PTA CADBURY CHOCOLATES

We will be selling Cadbury Chocolates early in Term 3. If any family does not wish to do this can they let Sharon in the office know. Thanks

SCHOOL DISCO

Term 2 Disco is this Friday 5th July.

Search through your wardrobe for something white / fluorescent / neon to wear, as our DJ has some special lighting that will make these colours glow!

The PTA will have glow sticks and finger lights for sale on the night just to complete your outfit.

We will also have food/treats for sale:

Mini hotdogs, potato chips, popcorn, chocolate bars, sweets and drinks.

Juniors 6.00 - 7.30 pm and Seniors 7.30 - 9.00 pm.

(Years 1-4)

(Years 5-8)

QUIZ NIGHT – THANK YOU FOR YOUR SUPPORT

Rotokauri School PTA would like to thank our sponsors for their generous donations. The following Companies have sponsored us:



129 Commerce Street
Frankton, Hamilton
New Zealand



(07) 847 5718
floristilene@gmail.com
www.floristilene.co.nz

J & D Hayde Partnership

Donna Hayde Photography



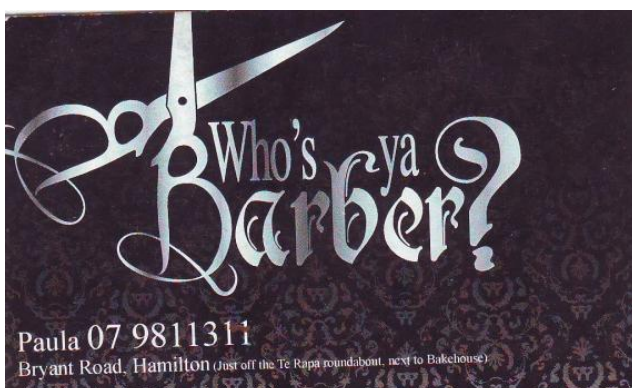
women's health & fitness specialists



Mai
Snelgrove



GROUP PERSONAL TRAINING



CLOTHING BIN

IT IS THE INITIATIVE OF SEVERAL ROTOKAURI SENIOR STUDENTS TO PUT TOGETHER A CLOTHING BIN FOR CHILDREN THAT ARE LESS FORTUNATE. SADLY, THERE ARE CHILDREN IN THE WAIKATO WHO ARE ARRIVING AT SCHOOL WITHOUT SHOES OR SUITABLE WINTER CLOTHING.

IF YOU HAVE ANY UNWANTED CHILDRENS' CLOTHING IN A DECENT CONDITION, IT WOULD BE FOR A GREAT CAUSE IF YOU COULD DONATE ANY UNWANTED CLOTHES.

THE CLOTHING BIN WILL BE LOCATED IN ROOM 6.

WE ARE COLLECTING FROM NOW ON. THE SOONER THE BETTER SO THESE NEEDED CLOTHES CAN BE DISTRIBUTED AS SOON AS POSSIBLE.

YOUR SUPPORT IS GREATLY NEEDED. THANK YOU ALL IN ANTICIPATION!

SAFIA, FIONA AND LIBBY

DRINK SWAP

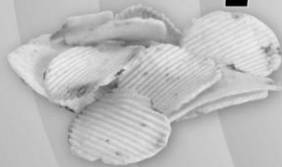
If you're thirsty, your body needs to be hydrated with water not sugary drinks. So swap fizzy for water, straight from the tap.



Note: 1 can of fizzy has 10 tsp sugar

SNACK SWAP 1

Instead of having potato chips that are high in fat, try swapping it for plain or homemade popcorn – it's great for adding to a lunchbox.



Making your world
Beautiful

Magnolia wanted

I am looking for magnolia for my shop, if anyone has a tree and wouldn't mind me giving it a good trim could you please let me know on
0274 303 844

Thanks
Marie Carlson

Don't forget we offer a 10% discount to the
Rotokauri community

129 Commerce Street
Frankton, Hamilton
New Zealand

(07) 847 5718

floristilene@gmail.com
www.floristilene.co.nz



NEW WORLD TE RAPA

New World vouchers are available from the school office to purchase - \$50.00 buys you a \$55.00 voucher.

Please continue to support New World Te Rapa who have donated thousands of dollars to Rotokauri School as part of their Flybuys Sponsorship Programme.



NEW WORLD

Te Rapa

Below are details of this week's meal deal in store. All the key ingredients and most of the extra bits and pieces are all conveniently located in the Meal Maker fridge next to the butchery department.

MEAL MAKER

FRESH MEALS  MADE EASY



Roast Pork Sirloin with Candied Yams and Tangy Cabbage



Pork Sirloin Roast Tied/Skin On 900g

+



Cabbage Half



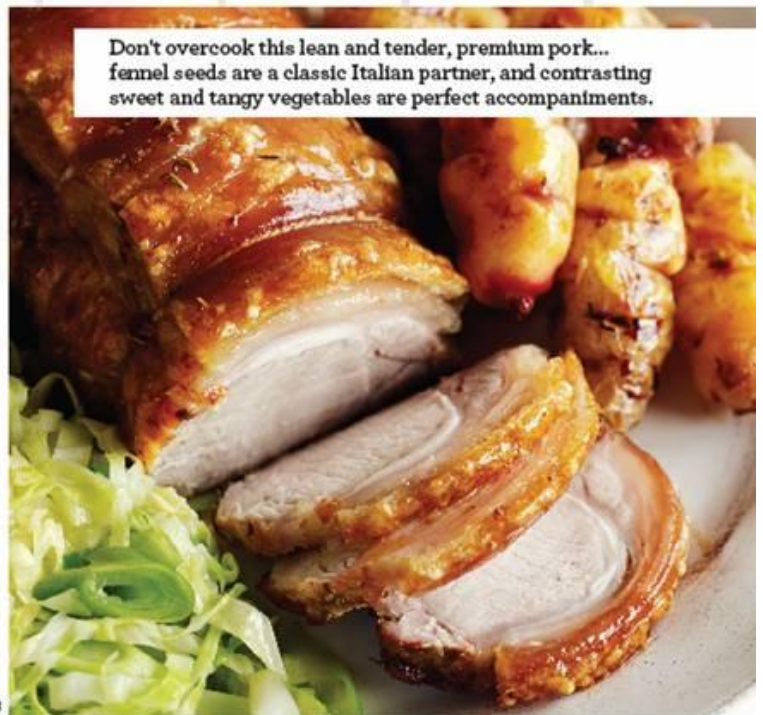
Red Yams 500g Bag

+



Spring Onions Bunch

= \$17.99



Promotional prices for lines bought outside the Meal Maker deal week from 1st July to 7th July 2013



NEW WORLD

Te Rapa

751 Te Rapa Road, Hamilton. Phone: 07 840 0300

Open 7am – 10pm



OSCAR APPROVED!

Gymnastics Holiday Programme



Mon 15th - Fri 19th July; Mon 22nd - Fri 26th July
9am-3pm \$25 per day 5-12 years

Theme days, Obstacle Courses, Tabloid Sports, Gymnaestrada, Gymnastics Theatre, Gymnastics Crafts

Timetable and enrolment forms available at www.hamcitygymsports.co.nz
office@hamcitygymsports.co.nz (07) 849 4546

Suitable for all shapes, sizes, ages and abilities.
Come join our qualified coaches in our purpose built facility



Special Programmes for Primary School Netballers



Fun Ferns

What: Fun Ferns Netball

Who: 5 - 10 year old students who are not yet playing Future Ferns netball.

Where: Minogue Park Netball Complex

When: 8th, 15th, 22nd, 29th August 5th, 12th September
Thursday afternoons 3.40pm - 4.40pm

Cost: \$50.00 per child for the 6 week programme
(Discount for 2 or more children from the same family)

Information:

Children wishing to be part of this programme are asked to please register online by 2nd August 2013 at www.netballhamilton.org.nz. Registrations open 8th July.

For further enquires please email events@netballhamilton.org.nz.

Payments can be sent to Hamilton City Netball Centre, P O Box 848, Hamilton or paid via internet banking to: - Hamilton City Netball Centre - Westpac 030318 0664616 00.

ASB is proud to support Rotokauri School

If you're a staff member or the parent of a child at Rotokauri School simply present this voucher when you talk to us about an ASB Home Loan and when your loan is drawn down, we'll make a donation to the school.

\$250 donation to Rotokauri School

For every new ASB Home Loan drawn down by a parent or staff member of your school.

This offer is only available through ASB Te Rapa Branch for any loan amount of \$150,000 or more. The offer ends on 30 December 2012.

ASB
Creating Futures

Make a good move today.

If you'd like to take up this offer, or chat about your banking in general, just drop by or give us a call.

ASB Te Rapa Branch
Shayne Jeffcoat
Branch Manager, Phone 07 834 4421



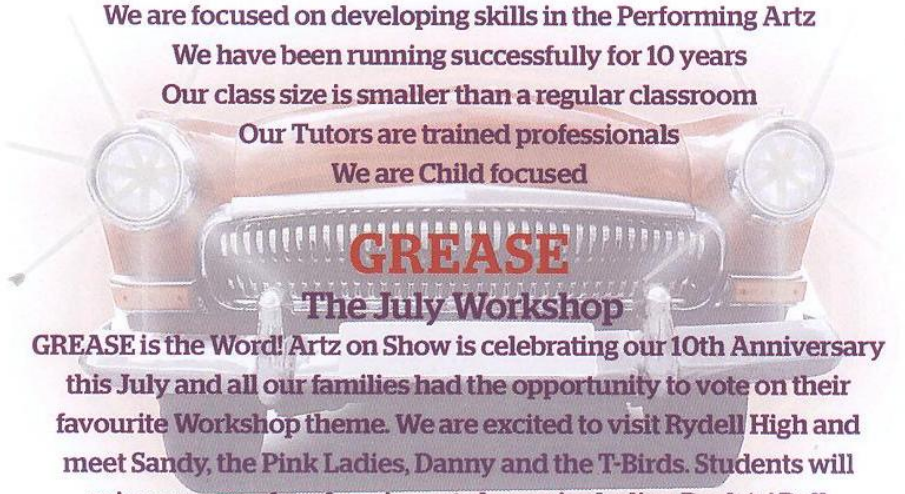
ARTZ ON SHOW.

WHERE **ARTZ** BEGINS

Artz on Show is a Performing Arts Workshop.
We run during the School Holidays for children aged 5-15.

What Sets Us Apart?

- Artz on Show is proven to build Confidence & Self Esteem
- We are focused on developing skills in the Performing Artz
- We have been running successfully for 10 years
- Our class size is smaller than a regular classroom
- Our Tutors are trained professionals
- We are Child focused



The July Workshop

GREASE is the Word! Artz on Show is celebrating our 10th Anniversary this July and all our families had the opportunity to vote on their favourite Workshop theme. We are excited to visit Rydell High and meet Sandy, the Pink Ladies, Danny and the T-Birds. Students will enjoy a range of performing art classes including Rock 'n' Roll, Ten pin bowling, Face Painting and Singing Classes.

To be a part of the show, enrol today.

9am - 4pm daily

15th - 19th July

22nd - 26th July

120 spaces **Epsom**
St Kents

Hamilton Only 30 spaces left
North Shore

Enrol online NOW at www.artzonshow.co.nz



Creative

MINDS

After School Art Classes

Crazy Collage & Printmaking

Do you like creating art from paper, paints and recycled materials?

This class will stretch your imagination while learning new skills in collaging and printmaking with fancy paper, fabrics and a variety of art materials.

Create a collaged canvas and photo frame.

Try **3** different styles of printmaking with safe to use inks, paints and dyes. Try monoprinting, fabric batik art and make original prints with card blocks and styrofoam. Experiment with designing your very own stamps.

Meet new friends, play art games and learn from experienced teacher-trained art tutors!

Class size is limited to a maximum of **10** children.

BOOK EARLY to reserve your child's place!

After School Class

At Your Child's School

Once per week, for **8 Weeks**

Ages **5 to 12 Years**

All materials included



For more info & to register visit:

www.creativeminds.co.nz

Email: info@creativeminds.co.nz

Mobile: 022 699 4439

Hamilton (07) 974 4925

Auckland: (09) 972 1613

Wellington: (04) 974 6560

Visit our Website to find out about...

Children's Holiday Programmes

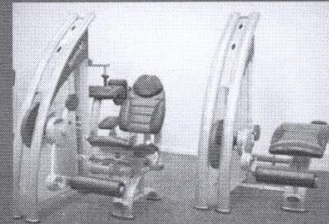
Arty Birthday Parties

Little Scribbles Preschool Groups

Social Adult Art Classes & Parties



Discounted Gym Memberships available to ROKOKAURI SCHOOL PARENTS & STAFF



\$14.80 per week
Normally **\$17.80pw**

- Over 160 free carparks
- Free use of over 100 gyms throughout NZ
- 24 hour use
- Group exercise classes
- Discounted membership
- Subsidised personal training when you join
- REPs certified staff and facility (independently audited annually)

To book a tour
contact Sherryn
07 849 6775 or 027 504 2070
sherryn@firstplacefitness.co.nz

**First Place
FITNESS CLUB**

24 HOUR GYM

614 Te Rapa Road, Hamilton | 07 849 6775 | info@firstplacefitness.co.nz
www.firstplacefitness.co.nz

Sponsors of the

Rotokauri School Coromandel Fishing Tournament



WEST HAMILTON
AUTO REFINISHER
JASON CAMPBELL

PANEL & PAINT
127 COLOMBO ST.
FRANKTON

P. 07 957 2415
F. 07 957 2416
M. 029 957 2415
E. whar_dsl@clear.net.nz



Southworth
Consulting Limited
Gilbert Southworth
SOUTHWORTH CONSULTING LTD
p 07 8380011 f 07 8380021 m 021 473660
P O Box 15114 Dinsdale
1148 Victoria Street
Hamilton 3243
e gilbert@southworth.co.nz



www.npnz.co.nz

Freephone 0508 4 POOLS

(76657)



Bright Property Solutions Ltd
Your "can do" handyman option

Kevin Bright
Repairs and Maintenance

40a Gibson Road, Dinsdale, Hamilton 3204
Mobile 027-3049517
Phone 07-8463227
Kevinbright1@gmail.com

Healthy Habits PT Studio

Come and give Boot Camp a try, the first session is free so drag your mates along and have some fun.

- Mon & Thurs 6.30am @ Te Kowhai school.
- Mon & Thurs 5.30pm @ Ashurst Park.
- Tues & Fri 6.00am @ the Lake.

Call me for one on one PT options also.

Sandra 8494334 or 021584466

<http://www.facebook.com/healthyhabitsPT>